

# Student Accounts

To login for your email: Go to the building web site and select Student Resources:

[www.maine207south.k12.il.us](http://www.maine207south.k12.il.us) [www.maine207west.k12.il.us](http://www.maine207west.k12.il.us) [www.maine207east.k12.il.us](http://www.maine207east.k12.il.us)

**Home of the Hawks** **Maine South High School**

[Home](#) [Courses](#) [Activities](#) [Athletics](#) [Staff](#) [CRC](#) [LRC](#) [Departments](#) [Student Resources](#) [Staff Resources](#) [Groupwise](#)

**Maine South Hawks**

**Contact Information**

1111 South Dee Road  
Park Ridge, IL 60068  
Phone: 847-825-7711  
Fax: 847-825-0677  
[Mr. David Claypool ~ Principal](#)  
[Mr. Greg Dietz ~ Assistant Principal for Staff](#)  
[Dr. Rose Garlasco ~ Assistant Principal for Students](#)  
[Ms. Marianne Kelly ~ Director of Student Personnel Services](#)

**Important Information**

[The Daily Bulletin](#)  
[Parent Handbook](#)  
[Career Resource Center Site](#)

**Important Dates**

Summer School  
June 16 to July 3 - 3 Week Course Session 1  
June 16 to July 8 - 3 1/2 Week Course Session 1  
June 16 to July 24 - 6 Week Course  
July 16 to July 31 - 7 Week Course  
July 7 to July 25 - 3 Week Course Session 2  
July 9 to July 31 - 3 1/2 Week Course Session 2

Other Dates  
August 21& 22 - Teacher Institute Days - No School  
August 25 - Opening Day of School for All Students

That selection links you to the following page. It will link to student e-mail; file storage and other student resources

**Home of the Hawks** **Maine South High School**

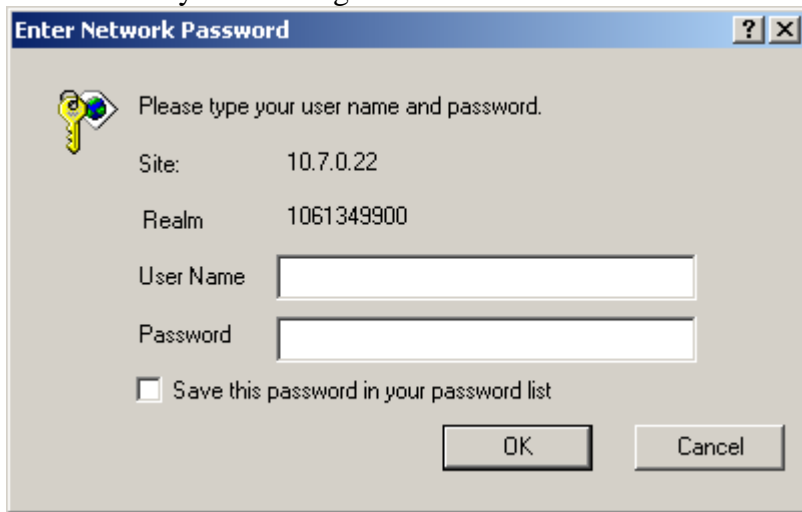
[Home](#) [Courses](#) [Activities](#) [Athletics](#) [Staff](#) [CRC](#) [LRC](#) [Departments](#) [Student Resources](#) [Staff Resources](#) [Groupwise](#)

**Click Below To Access A Student Resource**

[Student e-mail](#)  
[Student data storage](#)

[District Site](#) [Maine East](#) [Maine South](#) [Maine West](#)

You will use your own login information.



**Enter Network Password**

Please type your user name and password.

Site: 10.7.0.22

Realm: 1061349900

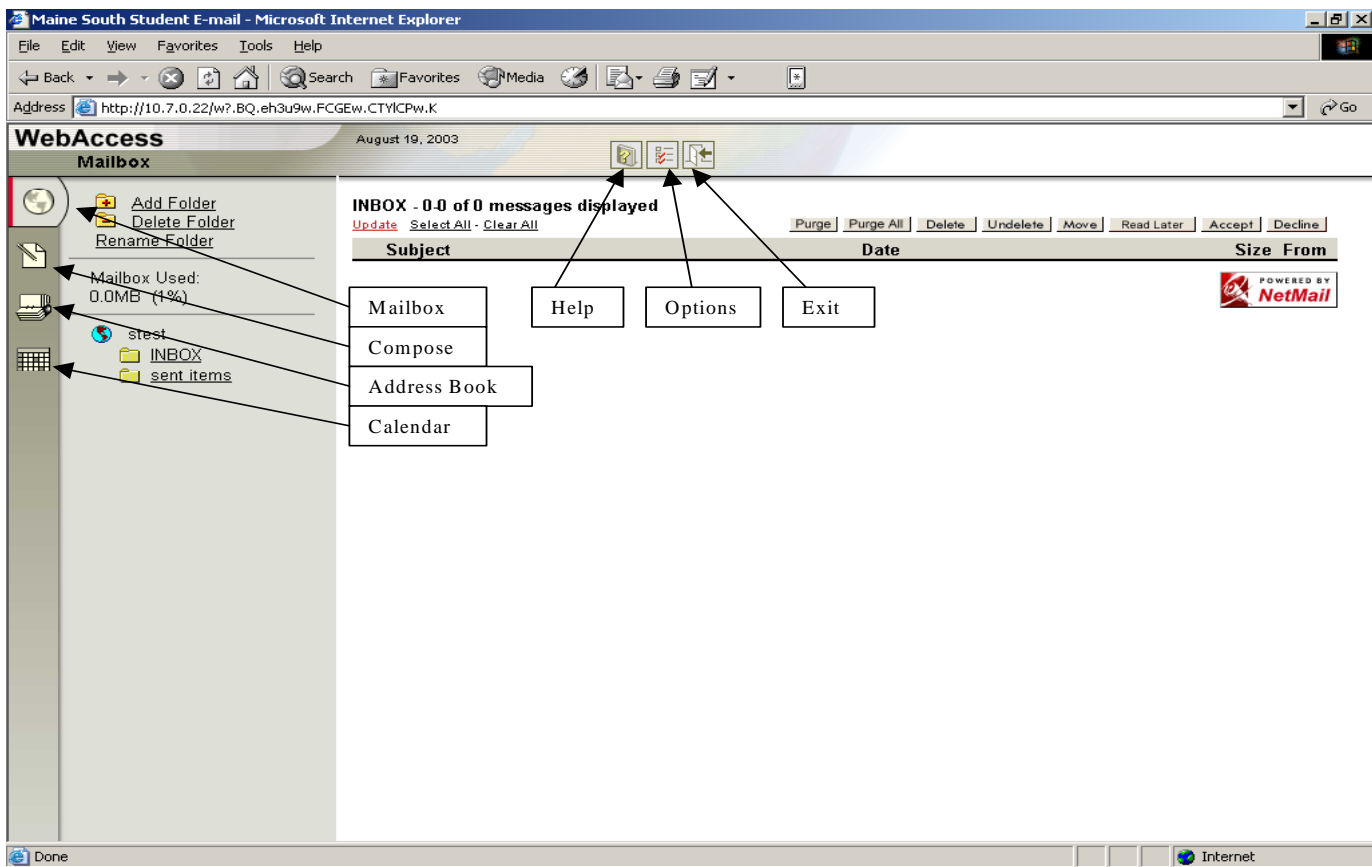
User Name:

Password:

Save this password in your password list

OK Cancel

This is the main screen that you will see:



Maine South Student E-mail - Microsoft Internet Explorer

Address: http://10.7.0.22/w?\_BQ\_eh3u9w.FCGEw.CTYICPw.K

WebAccess August 19, 2003

**Mailbox**

Mailbox Used: 0.0MB (4%)

stest

- INBOX
- sent items

INBOX - 0.0 of 0 messages displayed

Update Select All - Clear All

Purge Purge All Delete Undelete Move Read Later Accept Decline

Subject	Date	Size	From
---------	------	------	------

Help Options Exit

Mailbox Compose Address Book Calendar

POWERED BY NetMail

Done Internet

If you select Compose to create a new message you will see:

Change To :

To:

CC:  BC:

Subject:

Message:

If you select Address Book you will see:

On this screen you can type the first few letters of a last name to find a fellow student or teacher

Search For:

Personal:  System-wide:  Public:

**Personal:**

Name	Email Address	Phone
To:	CC:	BC:
<input type="button" value="Compose"/>		

**System-wide:**

Name	Email Address	Phone
To:	CC:	BC:
<input type="button" value="Compose"/>		

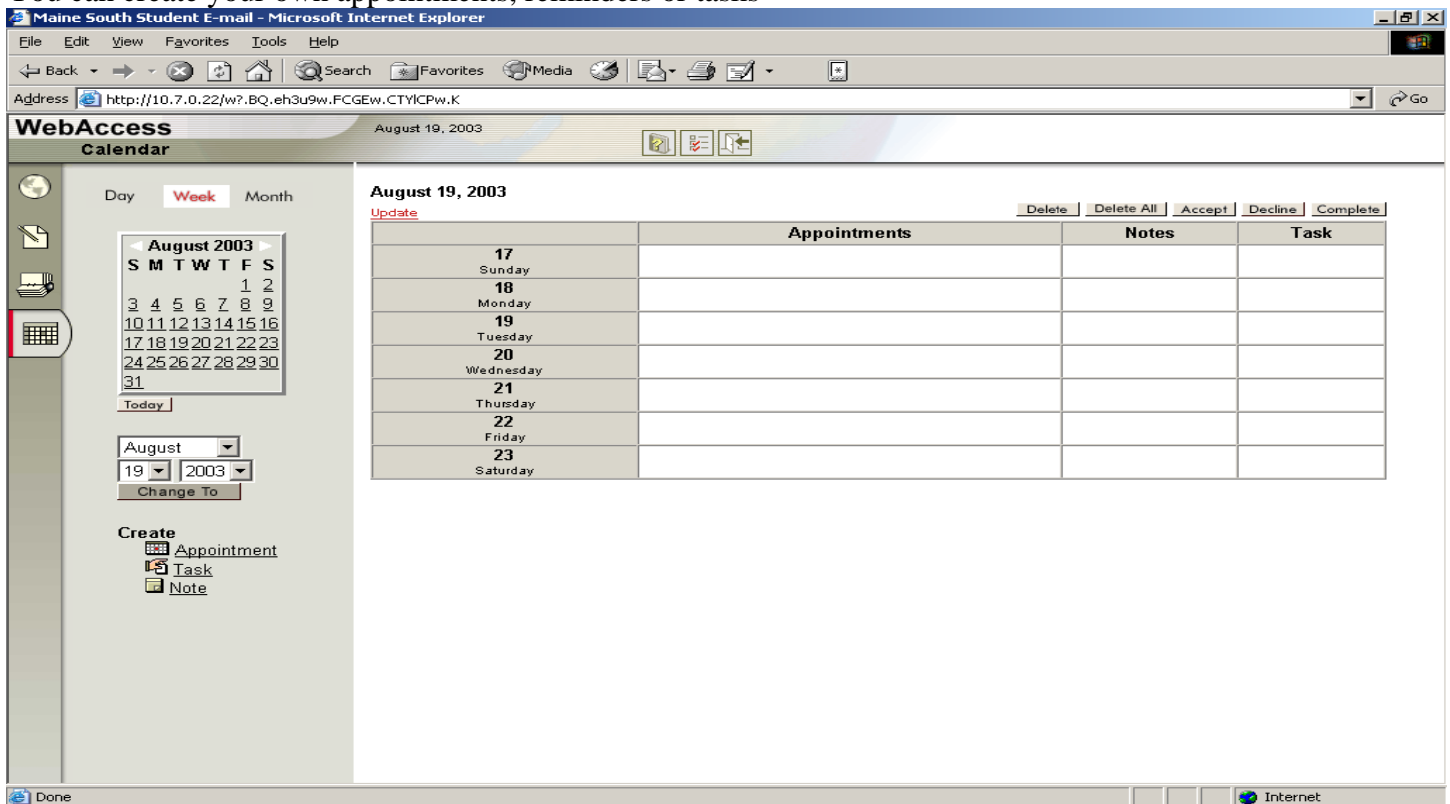
**Current Recipients:**

To:

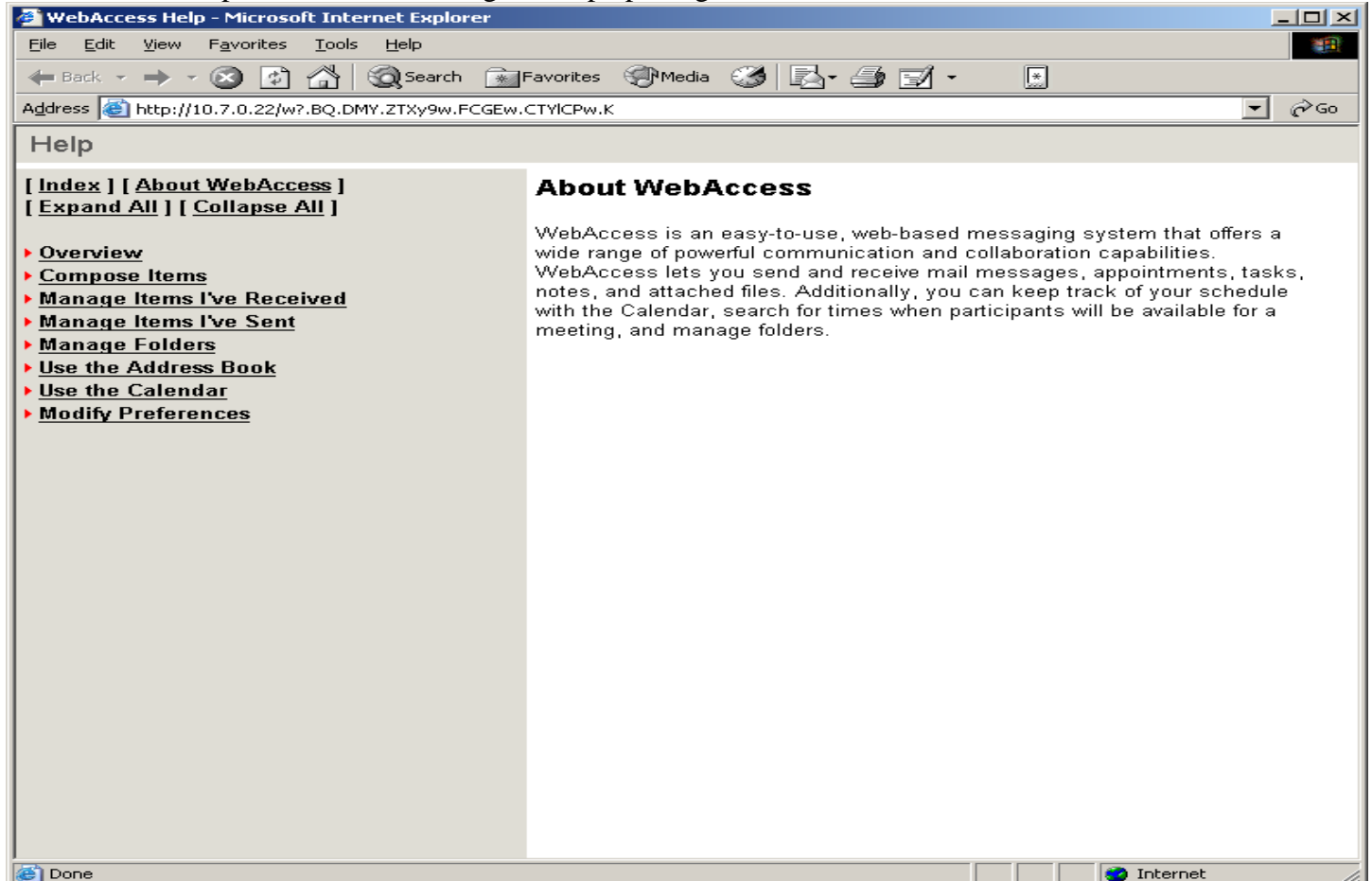
CC:

BC:

If you select Calendar then the week view looks like:  
 You can create your own appointments, reminders or tasks

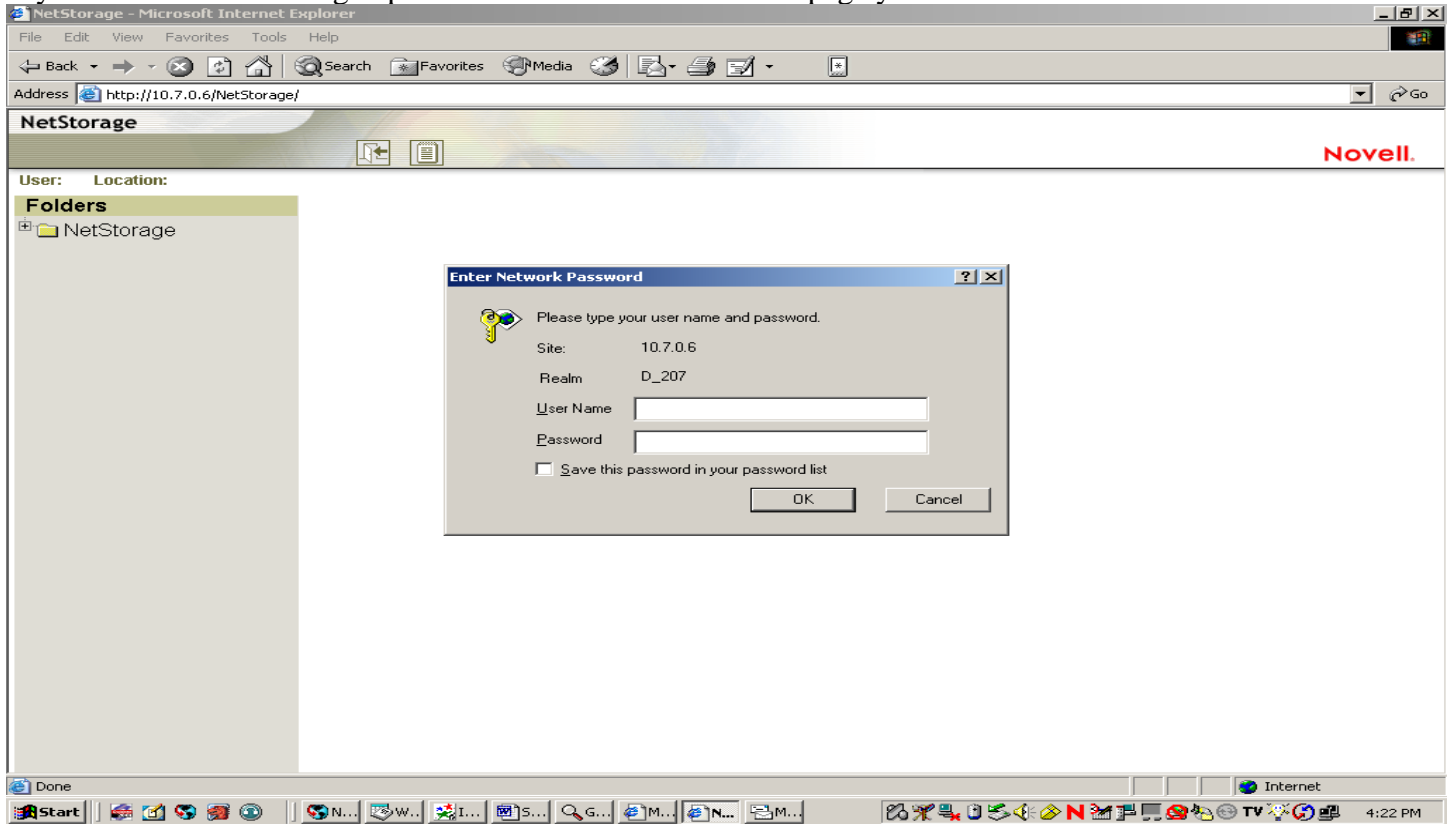


For additional help with e-mail selecting the help option gives this screen and an on-line users manual.

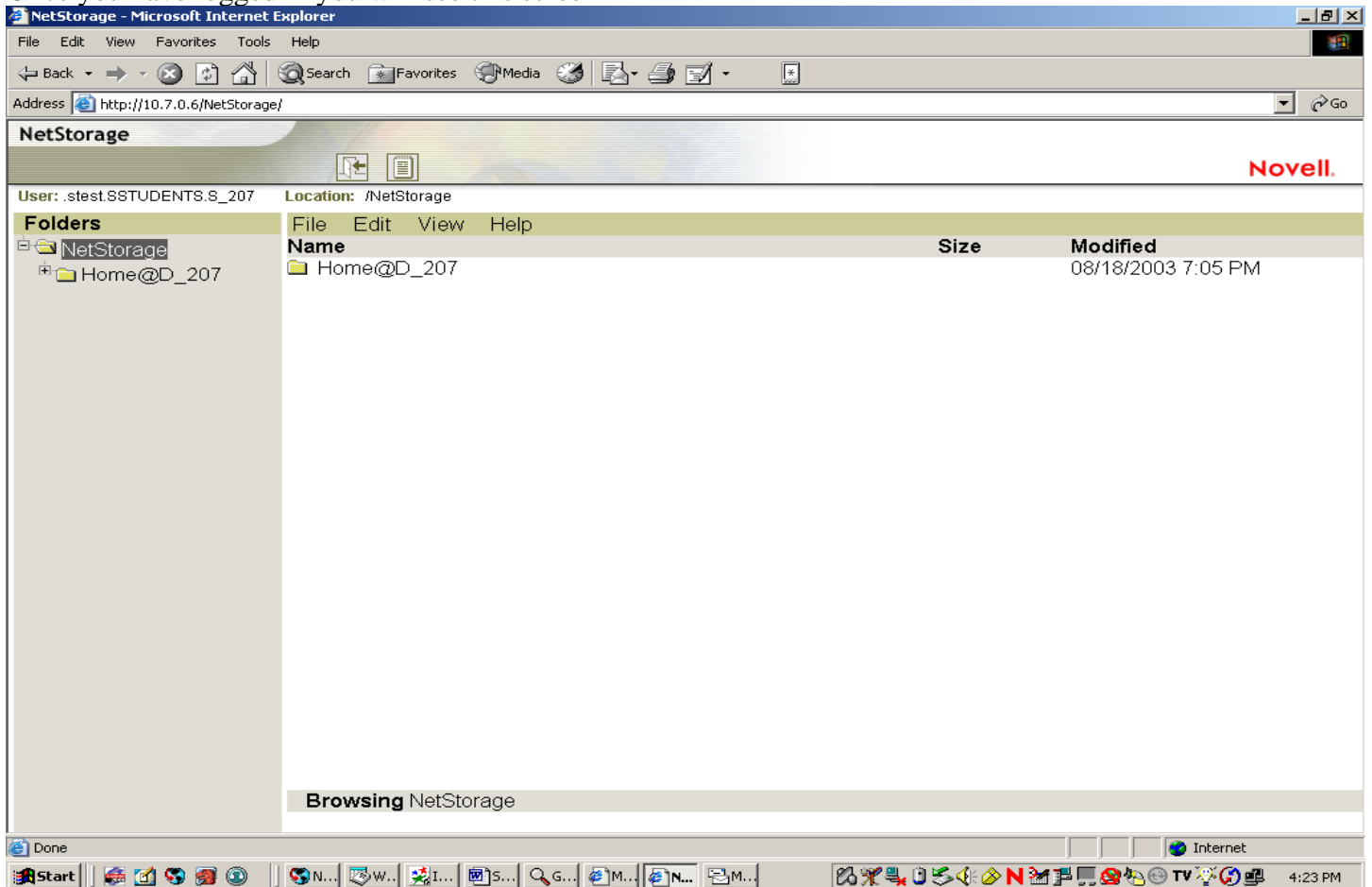


# Student access to files outside of school

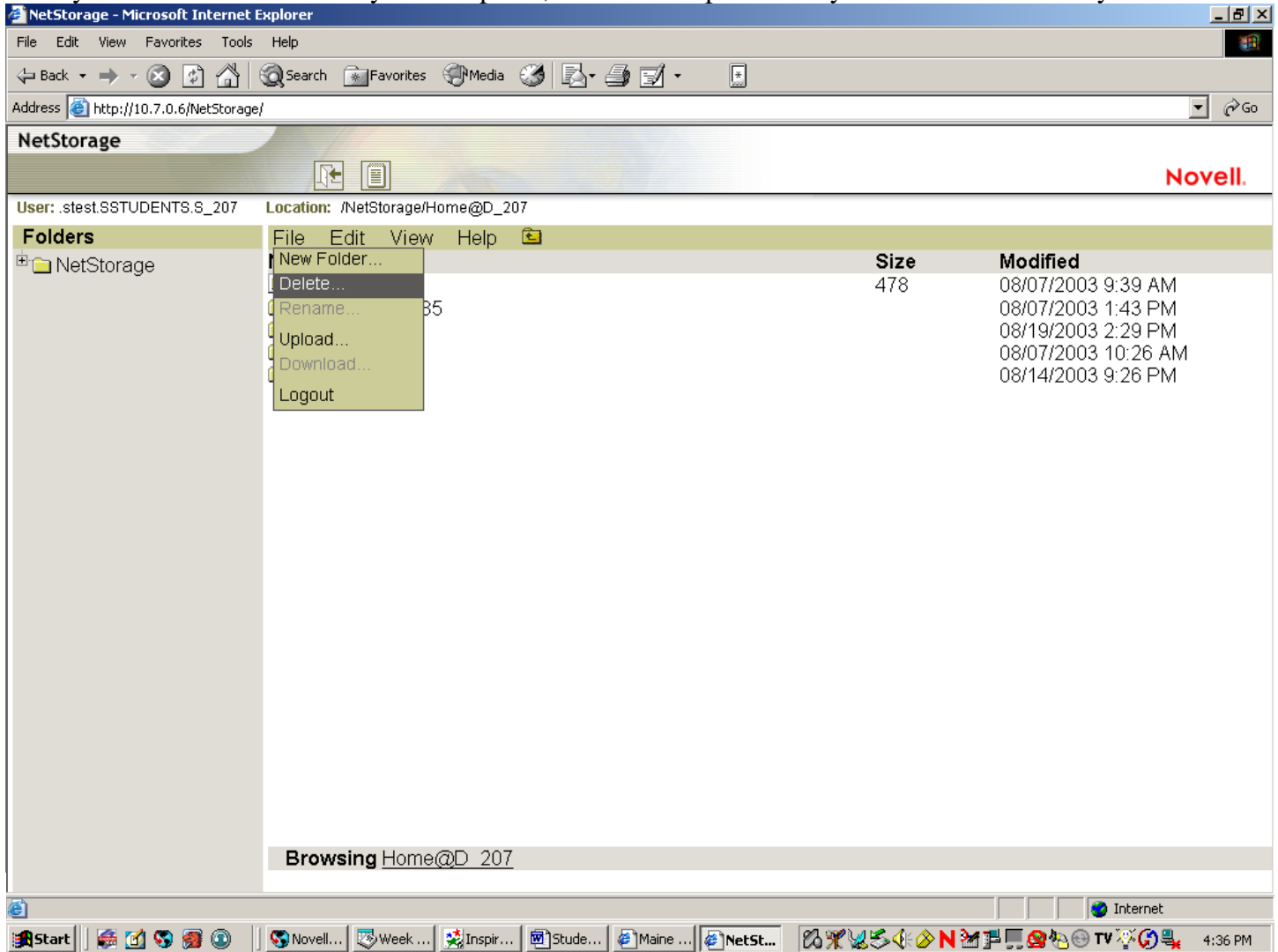
If you select the file storage option from the student resources page you will see:



Once you have logged in you will see this screen



Once you are in the folder view you can upload, download or perform any number of actions on your files:



## Access to files from a school computer with Novell login:

Students can use their personal login on any Dell in the building. The home drive (Drive H) is now the student's personal home drive and is the same file space that is accessed with web access.